

2021+ Bronco R Series

Installation Instructions
P/N: 422239 (1521-BRLVL1)



ROUSH
PERFORMANCE

ROUSHPERFORMANCE.COM | 800.59.ROUSH

2021+ Bronco R Series Installation Instructions

P/N: 422239 (1521-BRLVL1)



Application: 2021+ Bronco 2.3L/2.7L, 4 Door

Important Note:

Before installing your ROUSH Performance Product(s), read through the entire installation procedure and check to make sure all items are present. Contact ROUSH Customer Service at 1-800-59-ROUSH, weekdays from 9:00 AM to 5:00 PM EST, with any questions regarding fit, missing parts or instructions that are unclear to you.

Please note that the graphics in this kit were shipped in a manner to prevent damage during handling. Please open and lay the graphics out flat for storage if this vehicle ornamentation kit is not going to be installed within 1 week of purchase. Failure to follow this suggestion may result in the graphics taking a set in their shipping position which could lead to damage over extended periods of time. (Graphics could take a permanent crease or begin to separate from their carrier). Thank You for your attention to this matter.

TABLE OF CONTENTS

PACKING LIST FOR 2021+ BRONCO R SERIES KIT.....	3
PACKING LIST FOR 2021+ BRONCO HIGH CLEARANCE EXHAUST SYSTEM.....	4
PACKING LIST FOR 2021+ BRONCO TRAIL LIGHT SYSTEM.....	4
EQUIPMENT AND SUPPLIES REQUIRED	5
LIMIT OF LIABILITY STATEMENT	6
SAFETY PRECAUTIONS	6
WORK SAFELY!	6
VEHICLE PREPARATION FOR ORNAMENTATION INSTALLATION.....	7
ORNAMENTATION INSTALLATION.....	7
AIR INDUCTION REMOVAL	15
ROUSH AIR INDUCTION INSTALLATION	18
INSTALLATION OF WORK LIGHT MOUNTING BRACKET	23
INSTALLING OF WIRING HARNESS (WITHOUT UPFITTER SWITCHES).....	26
INSTALLING OF WIRING HARNESS (WITH UPFITTER SWITCHES)	27
SWITCH INSTALLATION	30
BRONCO TRAIL LIGHT ALIGNMENT	32
UPDATING TIRE SIZE IN RDT	33

PACKING LIST FOR 2021+ BRONCO R SERIES KIT

Description	Part Number	Quantity
R Series Kit	422239 (1521-BRLVLV1)	
ROUSH Air Induction Kit	(422233)1521-9600	1
ROUSH High Clearance Exhaust Kit	1521-5230	1
ROUSH Flow Formed Wheel w/Center Cap	PT00042245	5
ROUSH Trailer Hitch Cover	1115-25HTCHCV	1
Graphic – LH Body Side Flag	PT00041476	1
Graphic – RH Body Side Flag	PT00041477	1
Graphic - Jack ROUSH Signature	JRUSA-7	1
Graphic – Hood	PT00042995	1
Graphic – Upper Windshield Banner	PT00042996	1
Graphic – LH Body Side w/Keypad (Front)	PT00043028	1
Graphic – LH Body Side No Keypad (Front)	PT00042993	1
Graphic – LH Body Side (Rear)	PT00044355	1
Graphic – RH Body Side (Front)	PT00042994	1
Graphic – RH Body Side (Rear)	PT00044354	1
ROUSH Floor Mat Set – 4 Door w/Cargo	FS00058412	1
ROUSH Key Fob Battery Cover	1320-15K601	2
ROUSH Recovery Kit – Off Road	FS00057949	1
ROUSH Console Vault	1521-1105	1
ROUSH Fender Badge	PT00043012	2
ROUSH Door Jamb Serialization Label	PT00043715	1
Graphic – ROUSH Dash (Etched Glass)	PT00043604	1
Graphic – ROUSH Dash (Black)	PT00043603	1
Envelope	DLR-INFO-PKT	1
Certificate Of Authenticity – Bronco R Series	1521-COA	1
Certificate Of Authenticity Folder	1320-COAFOLDER	1
License Plate Frame – ROUSH w/Square R	421359	1
License Plate – ROUSH	R09010156	1

PACKING LIST FOR 2021+ BRONCO AIR INDUCTION KIT

Description	Part Number	Quantity
Air Induction Kit	422233 (1521-9600)	
Air Box Lid Assembly (Lid/Lens)	PT00041966	1
Foam Seal Lid to Air Box (71" Length Pre-Cut)	FS00057647	1
Air Filter – Red (Dry)	PT00041970	1
ROUSH Badge	PT00041667	1
Customer Care Kit	RETAIL DOC	1

PACKING LIST FOR 2021+ BRONCO HIGH CLEARANCE EXHAUST SYSTEM

Description	Part Number	Quantity
High Clearance Exhaust System	422233 (1521-5230)	
Muffler Assembly	PT00041889	1
3" Exhaust Clamp	10-0439	1
2.3L Bronco Exhaust Hanger	PT00045306/PT00045310	1
3" Black Coated Exhaust Tip w/Etching	1117HO-5230TIPB	1
Customer Care Kit	RETAIL DOC	1

PACKING LIST FOR 2021+ BRONCO TRAIL LIGHT SYSTEM

Description	Part Number	Quantity
Bronco Trail Light System	XP0095	1

Please note that the graphics in this kit were shipped in a manner to prevent damage during handling. Please open and lay the graphics out flat for storage if this vehicle ornamentation kit is not going to be installed within 1 week of purchase. Failure to follow this suggestion may result in the graphics taking a set in their shipping position which could lead to damage over extended periods of time. (Graphics could take a permanent crease or begin to separate from their carrier). Thank You for your attention to this matter.

S

EQUIPMENT AND SUPPLIES REQUIRED

FOR EXTERIOR ORNAMENTATION

- Plastic Squeegee
- China Marker/Grease Pencil
- Tape Measure/Measure Tool
- Step Stool
- Masking Tape
- Isopropyl Alcohol and Terry Cloth
- Metric Socket Set (deep and shallow)
- Spray bottle with soapy water mixture (5 drops of soap per 1 liter of water)
- General Automotive Tools (Pliers, Needle Nose, etc.)

FOR AIR INDUCTION

- Metric Socket Set (Deep and Shallow)
- Trim Removal Tool
- General Automotive Tools (Pliers, Needle Nose, etc.)

FOR EXHAUST

- 15 mm + 13 mm Socket Deep Well with Ratchet
- Torque Wrench for Sockets
- Soapy Water
- General Automotive Tools (Pliers, Needle Nose, etc.)

FOR TRAIL LIGHT

- Impact Drill
- T25 and T30 Torx bit
- 5-30 s Allen bit
- 10 mm socket
- A small extension
- Ratchet or electric ratchet

***Note: Check your vehicle's glove box to see if your Bronco is equipped with tools kit (Pictures shown below), you may find tools needed for this installation.**



If you are missing any items, please call us toll free at 1-800-59-ROUSH.

LIMIT OF LIABILITY STATEMENT

The information contained in this publication was accurate and in effect at the time the publication was approved for printing and is subject to change without notice or liability. ROUSH Performance Products (RPP) reserves the right to revise the information presented herein or to discontinue the production of parts described at any time.

SAFETY PRECAUTIONS



CAREFULLY READ THE IMPORTANT SAFETY PRECAUTIONS and WARNINGS BEFORE PROCEEDING WITH THE INSTALLATION!

Appropriate disassembly, assembly methods and procedures are essential to ensure the personal safety of the individual performing the kit installation. Improper installation due to the failure to correctly follow these instructions could cause personal injury or death. Read each step of the installation manual carefully before starting the installation.

- Always wear safety glasses for eye protection.
- Place ignition switch in the OFF position.
- Always apply the parking brake when working on a vehicle.
- Block the front and rear tire surface to prevent unexpected vehicle movement.
- If working with a lift, always consult vehicle manual for correct lifting specifications.
- Operate the engine only in well-ventilated areas to avoid exposure to carbon monoxide.
- Do not smoke or use flammable items near or around the fuel system.
- Use chemicals and cleaners in well-ventilated areas.
- Batteries produce explosive gases, which can cause personal injury. Therefore, do not allow flames, sparks or flammable substances to come near the battery.
- Keeps hands and any other objects away from the radiator fan blades.
- Keep yourself and your clothing away from moving parts when the engine is running.
- Do not wear loose clothing or jewelry that can get caught in rotating parts or scratch surface finishes.
- Allow the engine, cooling system, brakes and exhaust to cool before working on a vehicle.

WORK SAFELY!

Perform this installation on a good clean level surface for maximum safety and with the engine turned off.

VEHICLE PREPARATION FOR ORNAMENTATION INSTALLATION

1. Wash and dry the vehicle to make sure the exterior surfaces are free of dirt and debris.
2. Wipe down the following areas with isopropyl- alcohol to make sure they are free of any residue.
 - a. Hood Center
 - b. Upper Body Side (LH/RH)
 - c. Upper Windshield Surround
 - d. Front Fender – Upper Foremost Corners
 - e. Dash – below the Bronco impression
 - f. Passenger Door Jamb



ORNAMENTATION INSTALLATION

Hood Graphic

3. Place the hood graphic (PT00042995) onto a clean flat working surface. Measure the width of the graphic across the rear edge and put a mark on the top of the transfer paper using a grease pencil to indicate the center of the graphic.
4. Measure the distance across the center power dome bulge on the hood of the vehicle and mark the center location.
5. Position the hood graphic onto the hood of the vehicle and align the center mark on the hood with the center mark on the graphic. Position the graphic such that the rear edge of the graphic follows the rear edge of the hood and the outer perimeter of the graphic follows the power dome bulge body lines of the hood.



6. Apply a piece of masking tape across the center of the hood graphic to keep it in position.



7. Peel off the backing paper from one side of the hood graphic up towards the masking tape and trim the backing paper off.



8. Apply the soapy solution to the backside of the graphic and the sheet metal of the hood where the graphic is to be installed. Pull the portion of the hood graphic that has the backing removed back across the hood while maintaining constant tension and making sure that it does not contact the sheet metal. Use a plastic squeegee and drag it from the center out to the edge to apply the graphic. Once applied squeegee out any remaining air bubbles. **Do not squeegee the hood graphic directly across the trimmed edge of the backing.**



9. Peel the protective covering off of the applied portion of the hood graphic up towards the line of masking tape but do not go past the material that has already been applied. **Do not completely remove the protective covering yet.**



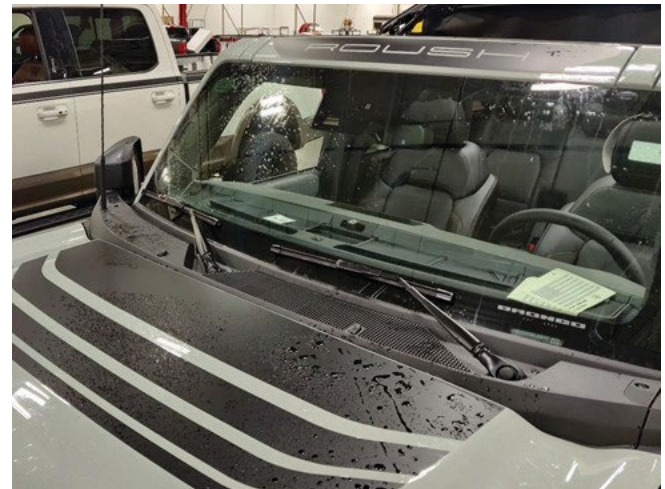
10. Move to the opposite side of the hood graphic, remove the masking tape and remove the rest of the backing paper. Spray the graphic and hood surface with soapy water mixture. Position the remaining portion of the hood graphic in place while keeping constant tension and making sure that it does not contact the sheet metal. Use a plastic squeegee and drag it from the center out to the edge to apply the graphic. Once applied squeegee out any remaining air bubbles.



11. Continue removing the transfer paper from the remaining portion of the hood graphic. Using a plastic squeegee, carefully remove any remaining air bubbles.

Upper Windshield Graphic Installation

12. Place the upper windshield banner (PT00042996) on a flat surface, measure the width of the graphic and mark the center location with a grease pencil.
13. Measure the width of the upper windshield surround and make a mark at the rear edge of the sheet metal in the center, closest to the roof.
14. Repeat the same procedure as used on the hood graphic to install the upper windshield banner. Apply soapy water mixture to the graphic and sheet metal, align the center marks and body line of the vehicle with the rear edge of the graphic and squeegee out any air bubbles in the graphic prior to removing the transfer paper.

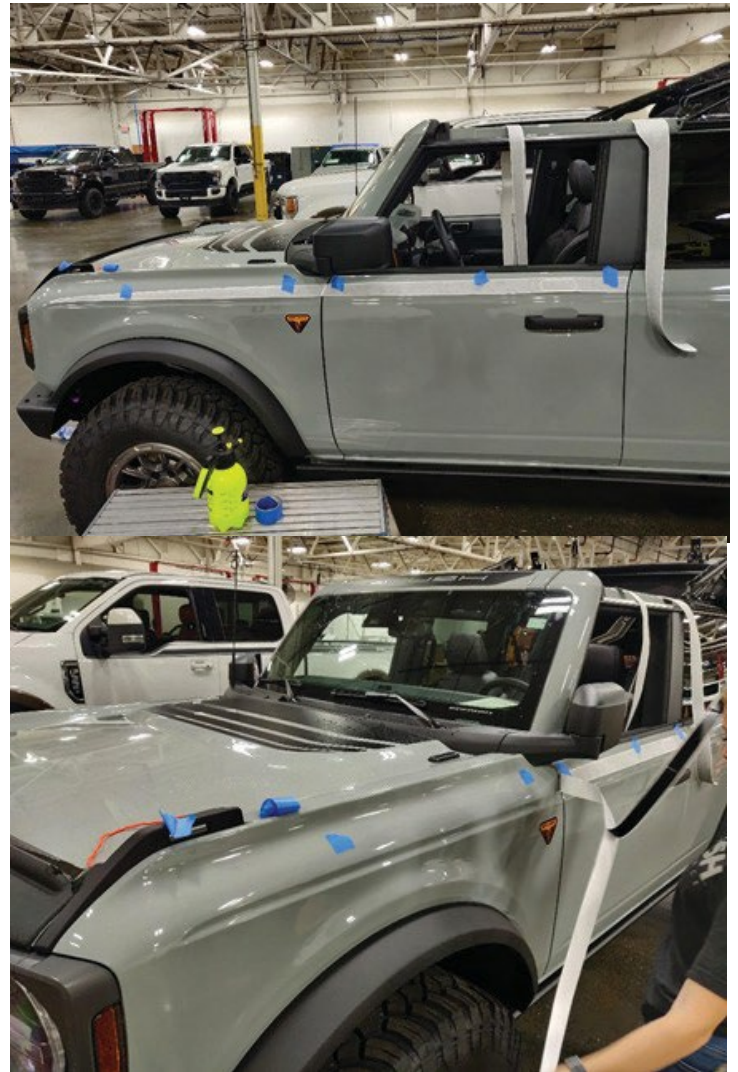


Body Side Stripe Installation

15. Included with the ROUSH R Series kit are two (2) LH side front graphics. If the vehicle is equipped with the Ford Keyless entry touch pad, use graphic part number PT00043028.

NOTE: The keypad is taped to the sheet metal of the vehicle. Remove the keypad prior to graphic installation and re-apply into the position outlined in the graphic. If the vehicle is not equipped with the keyless touchpad, utilize graphic part number PT00042993.

16. Position the appropriate LH side front stripe graphic PT00043028/PT00042993) into position by aligning the bottom edge of the graphic with the upper body line of the sheet metal and position the graphic fore-aft using the rear edge of the driver door. Tape the graphic into position as shown to keep it in place. The tape will also be used as your alignment mark when installing the graphic.
17. Cut the two (2) pieces of tape along the seam that is holding them to the fender, such that one piece remains on the sheet metal and one piece remains on the graphic. (This will act as an alignment feature.) Remove the backing paper from the front part of the graphic along the fender, while keeping the graphic on the door taped in place.



18. Apply soapy water mixture to the graphic and sheet metal. Pull the graphic back towards the front of the vehicle, align the tape that was cut, to maintain the proper positioning. Using a plastic squeegee, start at the forward edge of the door and apply the graphic toward the front of the vehicle.



19. Repeat this procedure from steps 18-20, for the rear section of the graphic.



20. If vehicle was equipped with the keyless entry touchpad, re-install the touch pad within the pocket outlined in the graphic. New double-sided tape (not provided) should be used for proper attachment.



21. Repeat steps 18-20 for the remaining side stripes.
22. Position the LH rear stripe (PT00044355) along the rear driver side of the vehicle.



23. Position the RH front (PT00042994) along the front of the passenger side of the vehicle.
24. Position the RH rear (PT00044354) along the rear of the passenger side of the vehicle.



Flag Graphics

25. Position the LH side flag (PT00041476) on the driver side of the vehicle, directly below the Bronco trim level badge on the front LH fender. (Stars in upper LH corner.)
26. Remove the backing and apply the flag graphic. Using a plastic squeegee, remove any air pockets from the graphic.
27. Remove the transfer paper from the top of the graphic.



28. Repeat on the opposite side of the vehicle with the RH side flag graphic (PT00041477). **NOTE:** The stars will be in the upper RH corner of the flag, on this side of the vehicle.



Jack ROUSH Signature Decal

29. Place the Jack ROUSH Signature decal (JRUSA-7) above the rear tailgate door handle as shown. Wet out graphic with plastic squeegee, remove any air bubbles and remove transfer paper.

NOTE: Alternate graphic location placement on vehicles equipped with the hard top option is the lower right hand corner of the rear glass.



Dash Decal

30. Two ROUSH dash decals were included with the R Series kit, depending on the color of dash the vehicle comes equipped with. If equipped with a dark color dash, install PT00043604 - Etched Glass decal. If equipped with a light color dash, install PT00043603 - Black decal.
31. Remove the backing paper and position the graphic on the dash below the BRONCO indentation and align the edge of the H in ROUSH with the O in Bronco. Wet out graphic with plastic squeegee, remove any air bubbles and remove transfer paper.



Door Jamb Decal

32. Open the passenger side door and wipe clean the surface on the B-pillar below the door lock latch.
33. Apply the ROUSH R Series Serialization decal (PT00043715) on the B-pillar in the position shown.



ROUSH Console Vault

Installation instructions and lock combination setting instructions can be found inside the box containing the ROUSH console vault (1521-1105).

ROUSH Floor Mat Set

The all-weather ROUSH floor mat set (FS00058412) includes two front mats, a one-piece rear seat mat and a rear cargo mat to keep the elements out.

ROUSH Key Fob Battery Cover

To install the ROUSH Key Fob Battery cover (1320-15K601), remove the key from the bottom of the key fob by pressing the button on the bottom in and pulling out. Use the key to pop open the battery cover. Snap the ROUSH cover into place and re-insert the key into the bottom of the fob.



Fender Badges

34. Place one fender badge (PT000443012) onto the front leading edge of each of the front fenders on either side of the vehicle.
35. Removing the backing tape and applying even pressure to fully wet out the badge to the sheet metal.



Allow several hours of dry time before cleaning. **Never power wash or scrape your ROUSH graphics.**

ROUSH Square R Hitch Cover

The ROUSH square R hitch cover (1115-25HTCHCV) wraps around the hitch to keep dirt/debris out of the receiver end of the hitch.

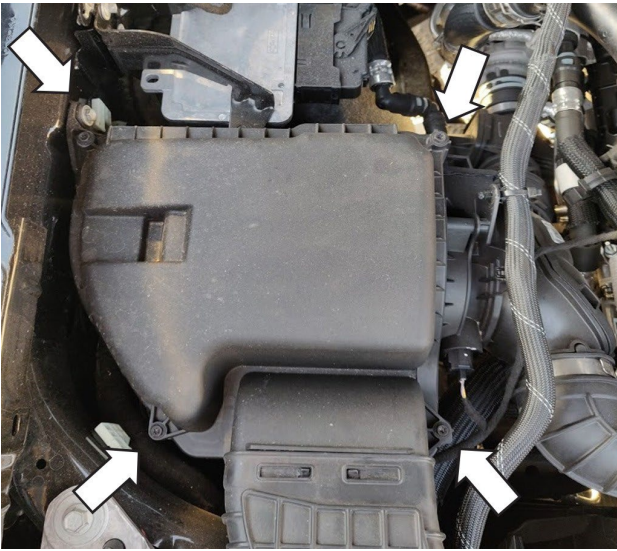
ROUSH Recovery Kit

The ROUSH recovery kit (FS00057949) contains the basic equipment to help you out on the trail. A 25 ft ROUSH branded recovery strap, two D-link shackles, a pair of gloves and a flashlight are packaged in a waterproof case ready to take on the elements.

AIR INDUCTION REMOVAL

The following section will guide you through the disassembly of the stock components. Special care should be taken to label fasteners and parts that are taken off during this procedure since many will be reused.

36. Cover both fenders with fender covers to protect the vehicle finish.
37. Open the hood of the vehicle and locate factory air box on passenger side.
38. Remove the four (4) screws that hold on the air intake lid using an 8 mm socket.



39. Remove the factory lid by using a small screwdriver or non-marring tool by inserting it here and twisting to release tension clips.



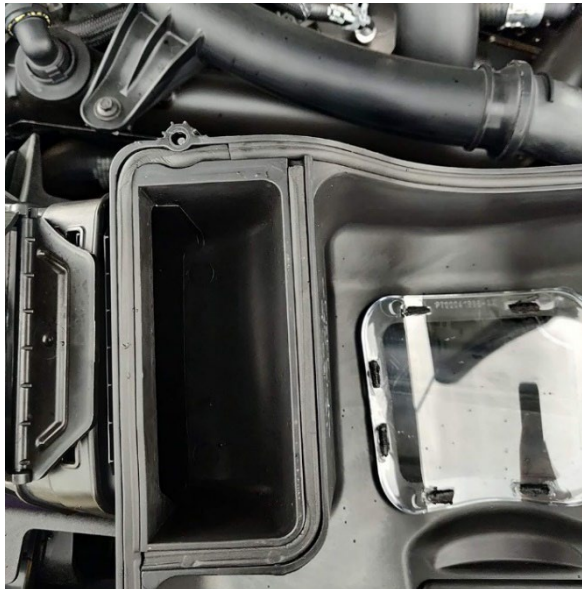
40. Remove the lid from the vehicle.
41. Remove the factory air filter by lifting up on the filter. There are no clamps to loosen.

ROUSH AIR INDUCTION INSTALLATION

42. Insert the new ROUSH high-capacity air filter (PT00041970) on the air tube and the factory lower air box tray. Prior to installation, the prefilter can be applied for extra dirt protection.



43. Install the cord seal (FS00057647) onto the air box lid by pressing into the retaining groove. Trimming with a razor blade is necessary to fit the inner portion of the seal. Make sure there are no gaps.



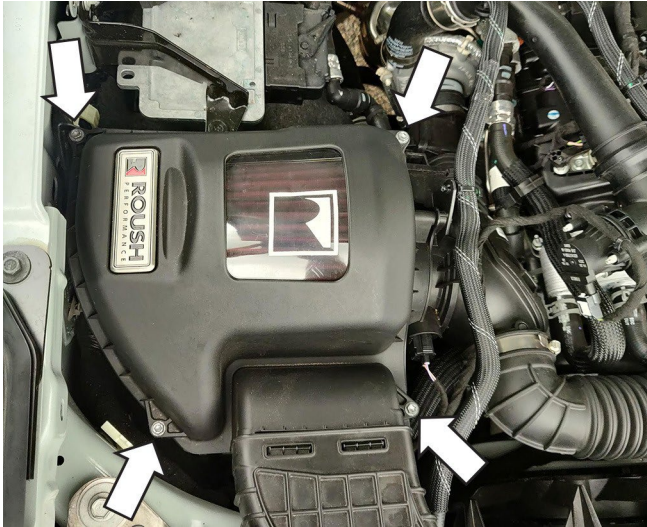
44. Wipe the lid with alcohol and install the ROUSH Badge (PT00041667) onto the air box lid by removing the backing tape and applying as shown.



45. Snap the new air box lid (PT00041966) rubber snorkel inlet.



46. Install the lid onto the lower air box tray using the four (4) screws removed previously. Torque to 3 Nm.

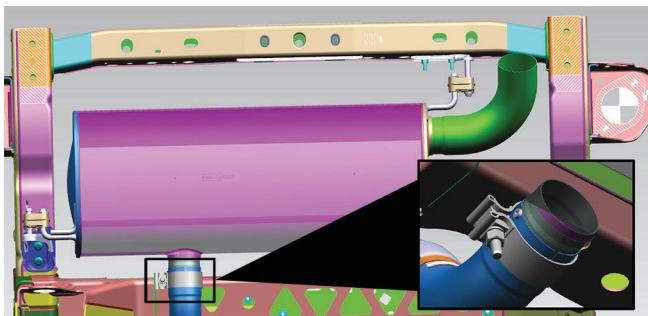


47. Start the vehicle and check for any leaks around air box lid. Make sure that the seal has not been distorted during installation.

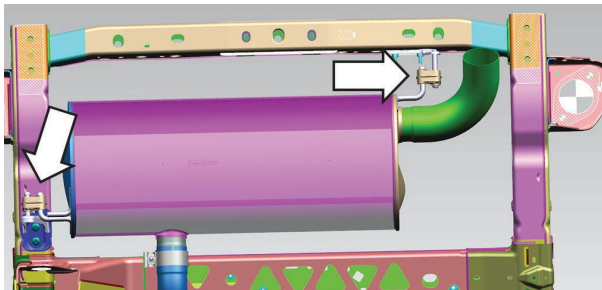
FACTORY MUFFLER REMOVAL

The following section will guide you through the disassembly of the stock components. Special care should be taken to label fasteners and parts that are taken off during this procedure since many will be reused.

48. Be sure to allow the vehicle exhaust system to cool before beginning the removal process so that the components are cool to the touch.
49. Using a 15 mm socket, loosen the band clamp just behind the rear frame member.

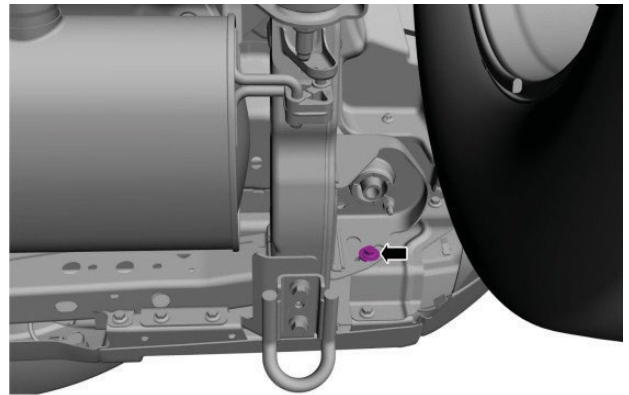


50. Spray exhaust hangers with soapy water and slide off the hanger isolator. Remove the muffler from the vehicle.



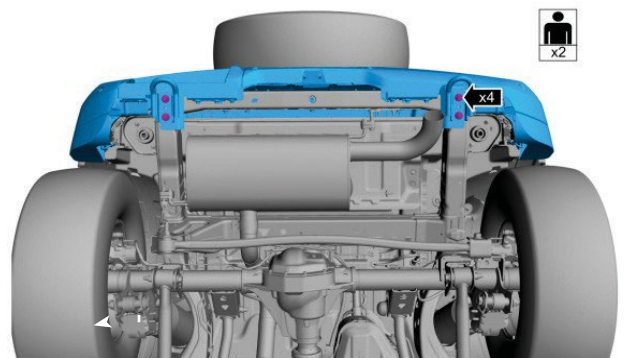
51. Unplug the rear bumper wiring harness, if equipped, on both sides of the vehicle just below the taillight at the edge of the bumper.

52. On both sides, remove the bolt shown used to adjust the bumper. (Torque to 27 Nm.)



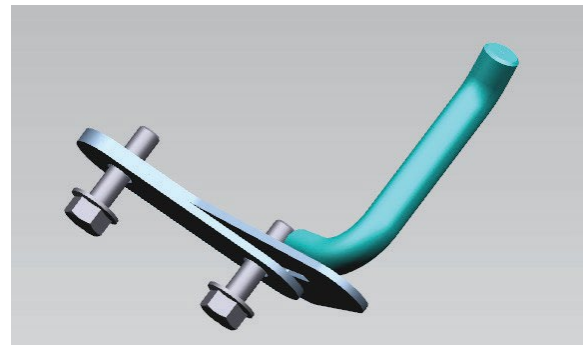
53. Remove the four (4) tow hook bolts and remove the rear bumper cover. (Torque to 80 Nm.)

NOTE: Some vehicles may only have one tow hook.

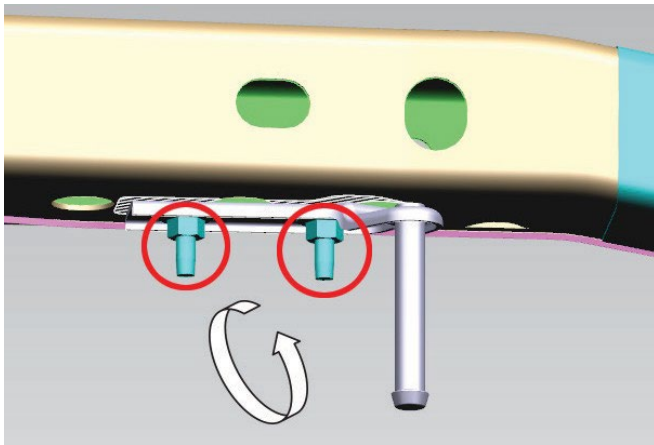


54. **2.3L:** Loosen the two (2) 13 mm nuts from the rear exhaust hanger. Remove the exhaust hanger, flip 180 degrees and reinstall. Retighten the nuts to 35 Nm.

2.7L: Loosen the two (2) 13 mm nuts from the rear exhaust hanger. Remove the exhaust hanger, install provided hanger PN: PT00045306 and PT00045310 as shown. (Install the spacer against the frame and hanger on top.)

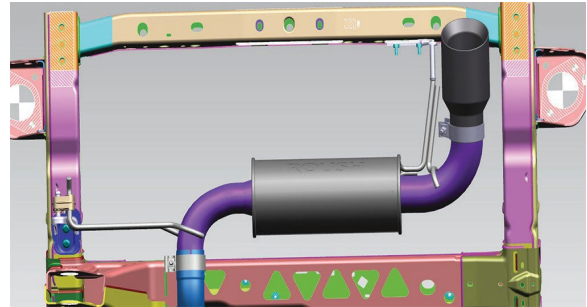


55. Reinstall the bumper reversing steps 49-54.



ROUSH MUFFLER INSTALLATION

56. Slide the exhaust hanger isolators onto the factory mounts removed previously.
57. Install the ROUSH muffler onto the vehicle.
58. Install the ROUSH exhaust tip (1117HO-5230TIPB) and clamp (10-0439) onto the muffler. Hand tighten with the logo facing up just so you can still rotate tip.



59. Tighten the exhaust clamp first at the overaxle portion to 55 Nm.
60. Tighten the exhaust clamp at tip last. Be sure to orient the tip with the ROUSH logo facing up. Torque to 55 Nm.
61. Start the vehicle and check for exhaust leaks. If leaks are present, make sure the exhaust system is fully inserted into the vehicle. Re-tighten the clamps to 55 Nm. **NOTE:** There is a small drain hole on the muffler. Disregard this drain hole during the leak check, as some exhaust will be seen coming from this drain hole.

INSTALLATION OF WORK LIGHT MOUNTING BRACKET

62. Disconnect negative battery cable and remove radio antenna by twisting it in a counterclockwise direction, set it aside for the last step.



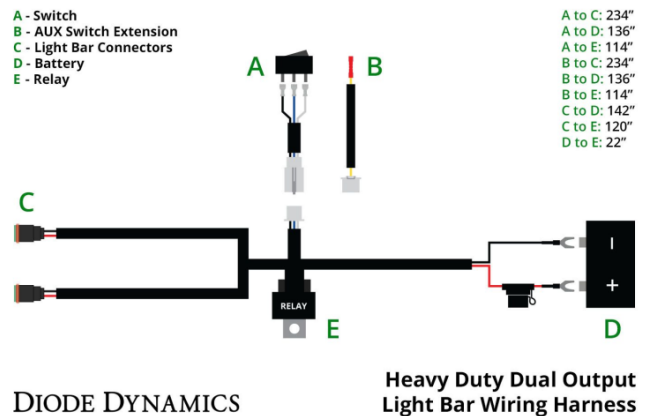
63. Remove the T25 and T30 torx fasteners from the passenger's side of the vehicle. *Note: The bolt above the antenna is size T30, and the bolt closer to the side mirror is size T25.



64. Lift cowl after four bolts have been removed, Open vehicle hood.



65. Identify passenger side and driver side of the wire harness, layout the wire harness in the engine bay.
*Note: Passenger side should be longer than the driver side, please verify the length before the next step.



66. Route wire harness connector thru as shown on the passenger's side. *Note: Verify the correct amount of wire to be able to connect to the light, re-secure the cowl by push it away from the windshield, the cowl should snap back in place.



67. While working on the passenger's side, align the Work Light Mounting Bracket in position as shown, tighten down the T25 torx fastener with the supplied washer from the kit.

*Note: DO NOT OVER TIGHTEN torx fastener on the bracket



68. Repeat the same process on the driver's side.

*Note the position of the wire harness by the windshield.



69. Locate one LED light pod, Position the two 5/16 nuts in the holes located at the back of the light pod. (The two nuts are facing toward each other)



70. Use the two 5/16 allen screws secure the lamp to the driver side Work Light Mounting Bracket

*Note: For the lamp position, the connector is on the bottom side of the lamp. The "D" logo should be in the upright



71. Connect the female electrical connector to the lamp. **FOR VEHICLES WITHOUT UPFITTERS SWITCHES CONTINUE TO THE NEXT SECTION.**



FOR VEHICLES WITH UPFITTERS SWITCHES CONTINUE TO PAGE 27.

72. Repeat the same process on the other side.



73. Reinstall the radio antenna by twisting it in clockwise direction, and make sure the letter "D" circled shown is upright on Both light pods.



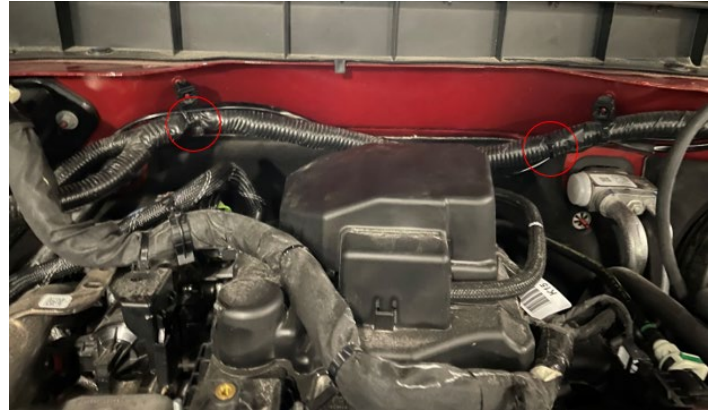
INSTALLING OF WIRING HARNESS (WITHOUT UPFITTER SWITCHES)

74. Route the given harness under hood by attaching it with zip ties to the existing black harness at the back engine compartment wall.

*Note: red dotted line below shows the wiring harness' route.



*Note: Zip ties the given wiring harness to the existing wire at the back engine compartment wall as example shown below, cut off the end of zip ties to desired length.



75. Verify the length for connectors thru the openings by the hood hinges, up thru the panels above and to the lights, use edge biter clip zip ties on both driver's side and passenger's side as circled below, cut off the end of zip ties to desired length.



Passenger Side

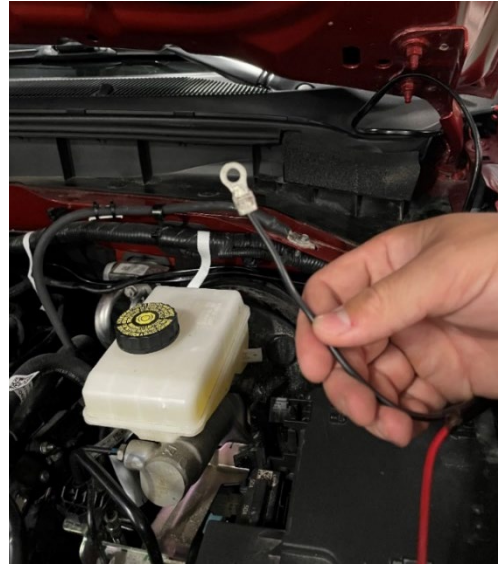
Driver Side

INSTALLING OF WIRING HARNESS (WITH UPFITTER SWITCHES)

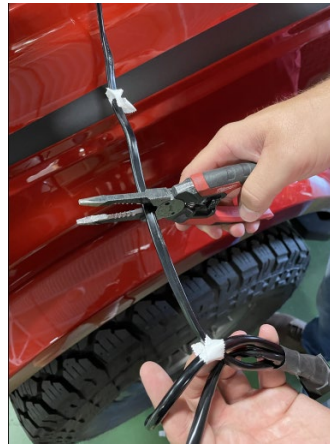
76. The upfitter switches (6 switches in total) are located above the rearview mirror.
- *Note: The factory-installed upfitter switches are optional extra on the Base and Outer Banks versions, and standard on Black Diamond, Wild Trak, Badlands, and First Edition trims. Check your Bronco to see if you have upfitter switches.
- *Note: For more information about your Bronco please go to Bronco Owner's Manual.



77. If your vehicle is equipped with upfitter switches, cut the supplied wiring harness with the light end connectors at the relay switch, peel back the protective coating about 6 inches and expose a red and black wire.
- *Note Discard the portion with the relay and the on/off switch.



78. See Images below.



79. Locate the upfitter wiring under the hood on the driver's side.



80. Referring to the wiring diagram on the below, locate the yellow wire (1st switch wire).

*Note: If the yellow wire is connected to other accessory, please use another switch wire.

Relays are Coded as Follows:

Power Distribution Box	Wire Color	Wire Size	Fuse
AUX1	Yellow	1.5 mm ²	25A
AUX2	Green/Brown	1.5 mm ²	15A
AUX3	Violet/Green	0.75 mm ²	10A
AUX4	Brown	0.35 mm ²	5A
AUX5	Blue/Orange	0.35 mm ²	5A
AUX6	Yellow/Orange	0.35 mm ²	5A

Non-powered Circuits:

Circuit	Location	Wire Color	Wire Size
B1	Passenger Compartment	Brown/White	1.5 mm ²
B2	Passenger Compartment	White	1.5 mm ²
C	Front Grille	Violet/Grey	1.5 mm ²
D	Right-hand Visor	Grey/Orange	1.5 mm ²
E	Right-hand Rear Quarter Panel	White/Grey	1.5 mm ²

AUX SWITCHES INFORMATION

*Note: You can find aux switches information from your Bronco Owner's Manual.



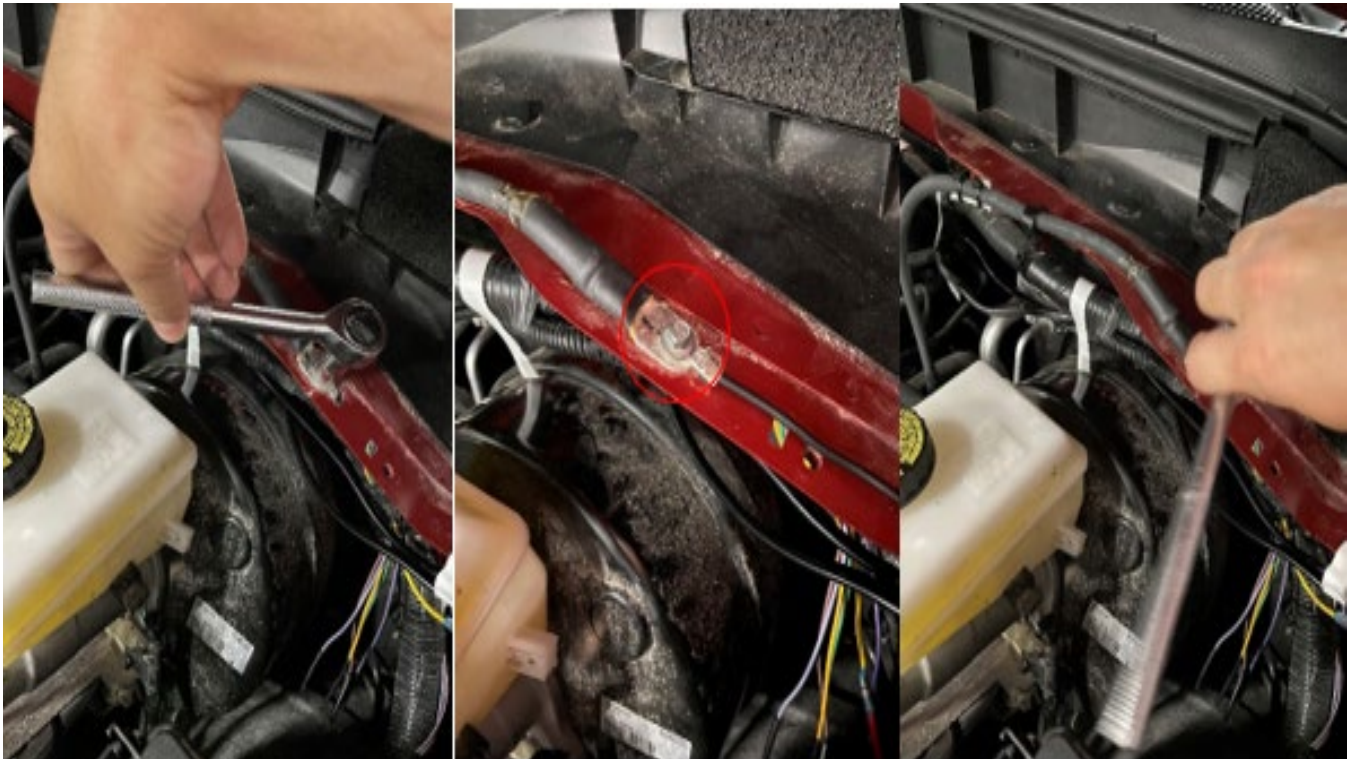
81. Install butt connector from RED power wire to upfitter YELLOW wire.



83. Add zip ties as shown below to make the engine bay organized



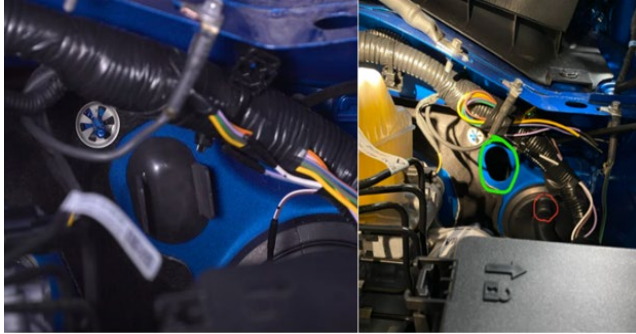
82. Connect the black ground wire and fasten it with 8mm socket to the existing ground on the driver's side rear cowl area.



SWITCH INSTALLATION

DO NOT CUT THE HARNESS, Follow the under-hood wiring routing for Bronco without upfitter switches.

84. Find rubber grommet on driver's side and pull out from cab. See location below.



85. Fish wire and switch thru hole and into interior. Be sure to have enough wire going into the interior to reach the desired switch location.



86. With the on/off switch wires in, reinstall the plug from the interior side working around the harness.

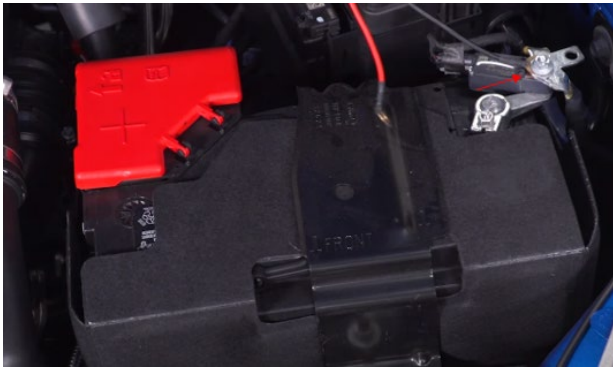


87. Locate a position on the interior dash and install the on/off switch.

*Note: Zip tie as needed so the wire is not in the way of moving parts.



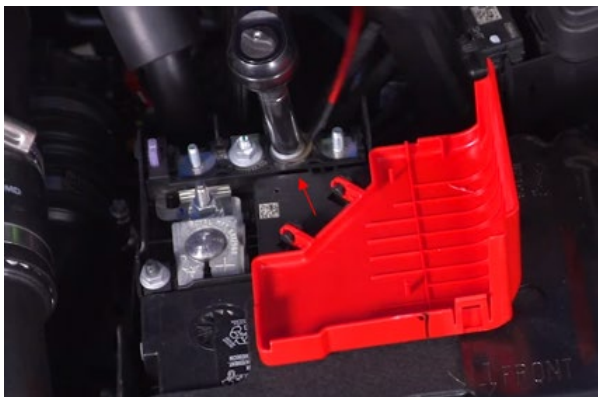
88. Install battery ground (negative) black wire to negative battery terminal.



90. When completed, close red protective cover.



89. Open red protective cover over battery positive terminal and install red positive wire to bus bar terminal using one of the fasteners on the bus bar.



BRONCO TRAIL LIGHT ALIGNMENT

91. After light installation is complete, check to see Both lights turn on with upfitter switch / dash switch.



92. Park vehicle in garage with limited or no lighting, move the light bracket to either center position or side position.

*Note: Either position is correct, it will depend on vehicle application such as off-road



93. Examples below shows the light direction (red arrows) in either center position or side position.



Center Position (On-Road)

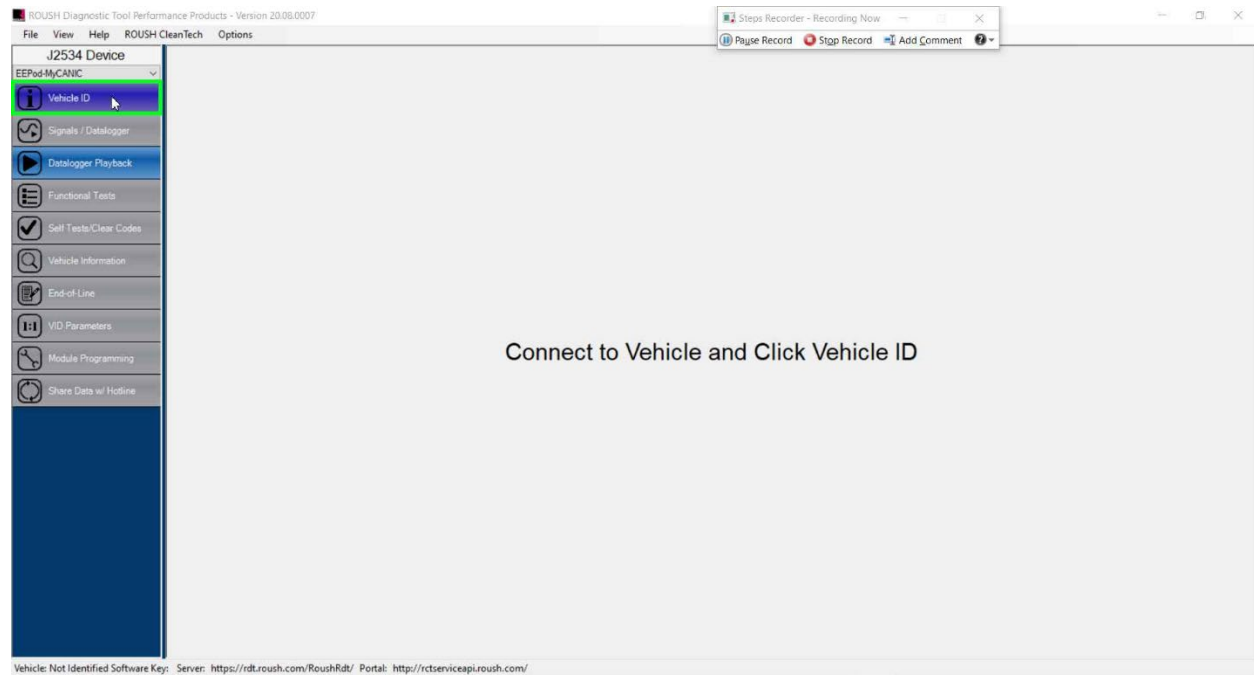
Side Position (Off-Road)

94. The Bronco Trail Light installation is complete.

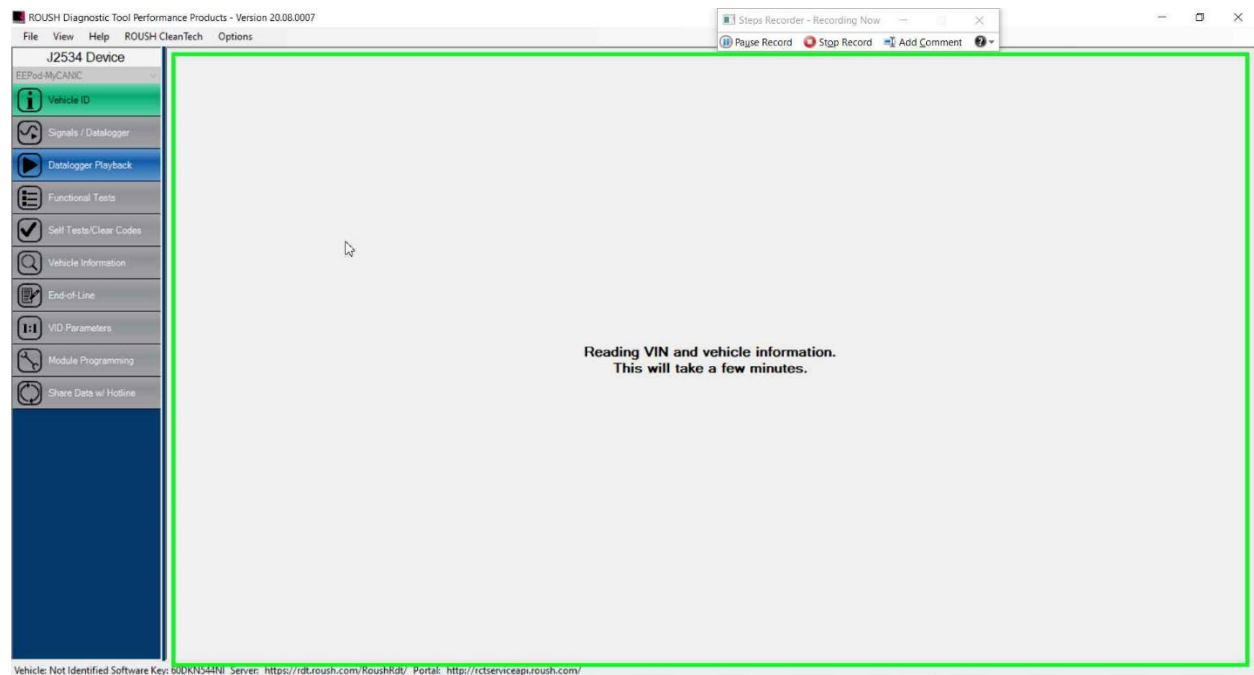


UPDATING TIRE SIZE IN RDT

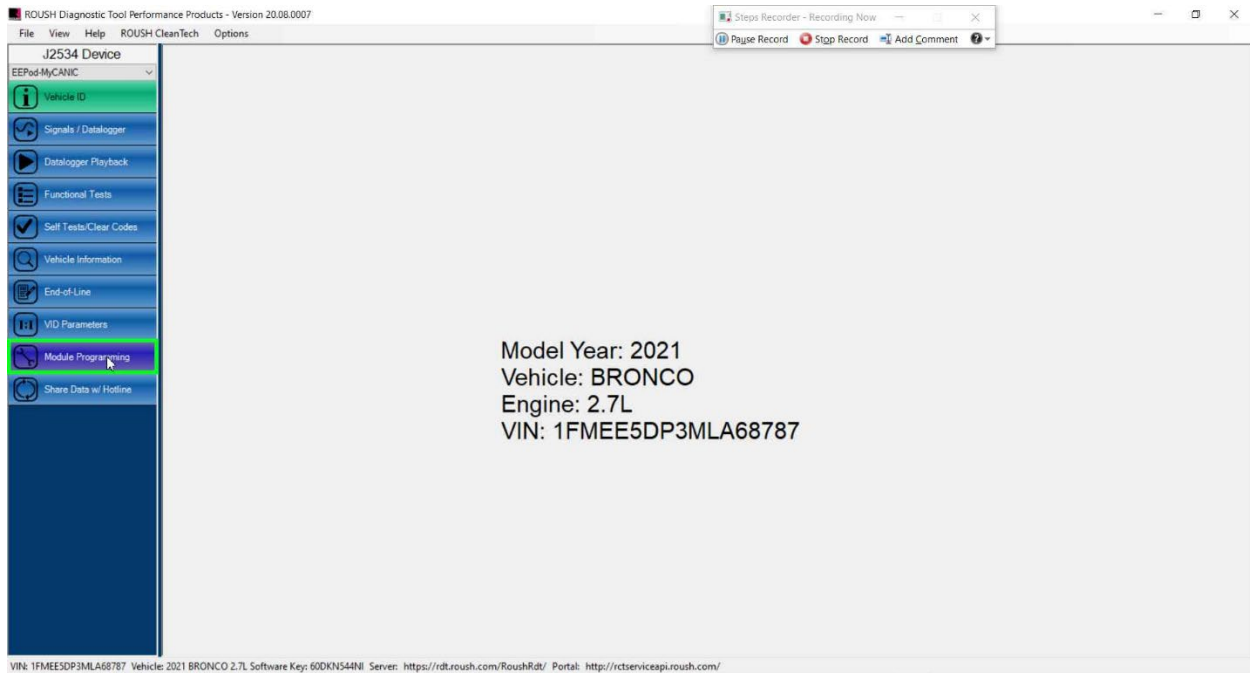
1.



2.



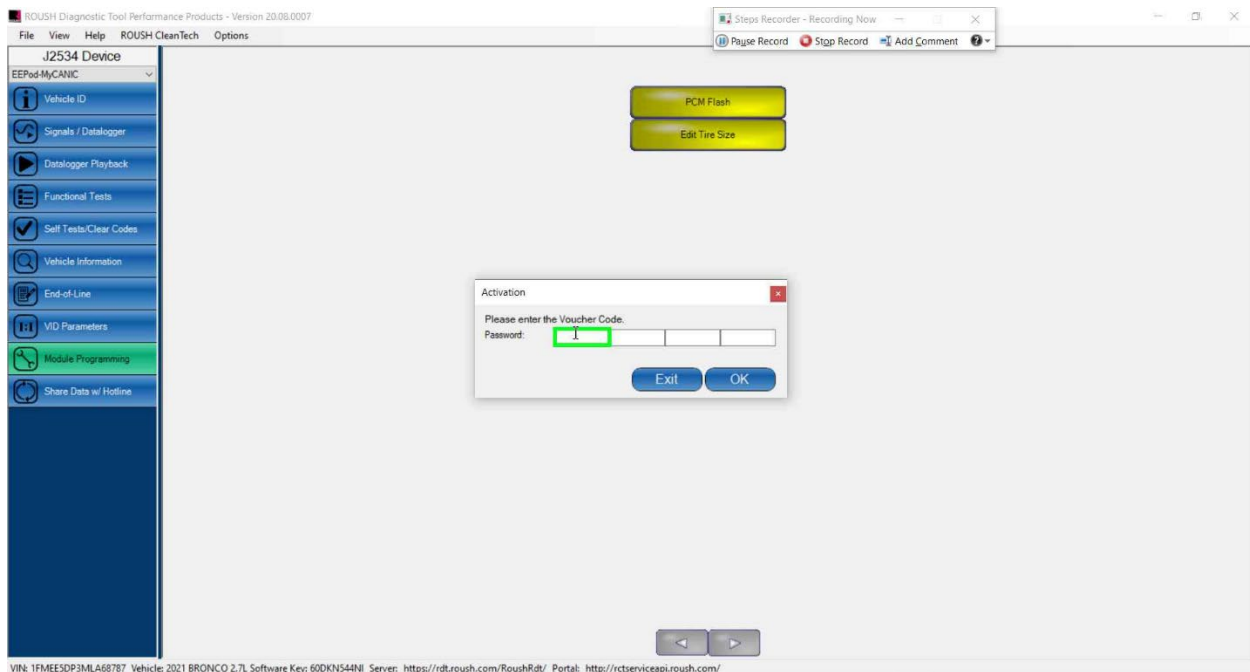
3.



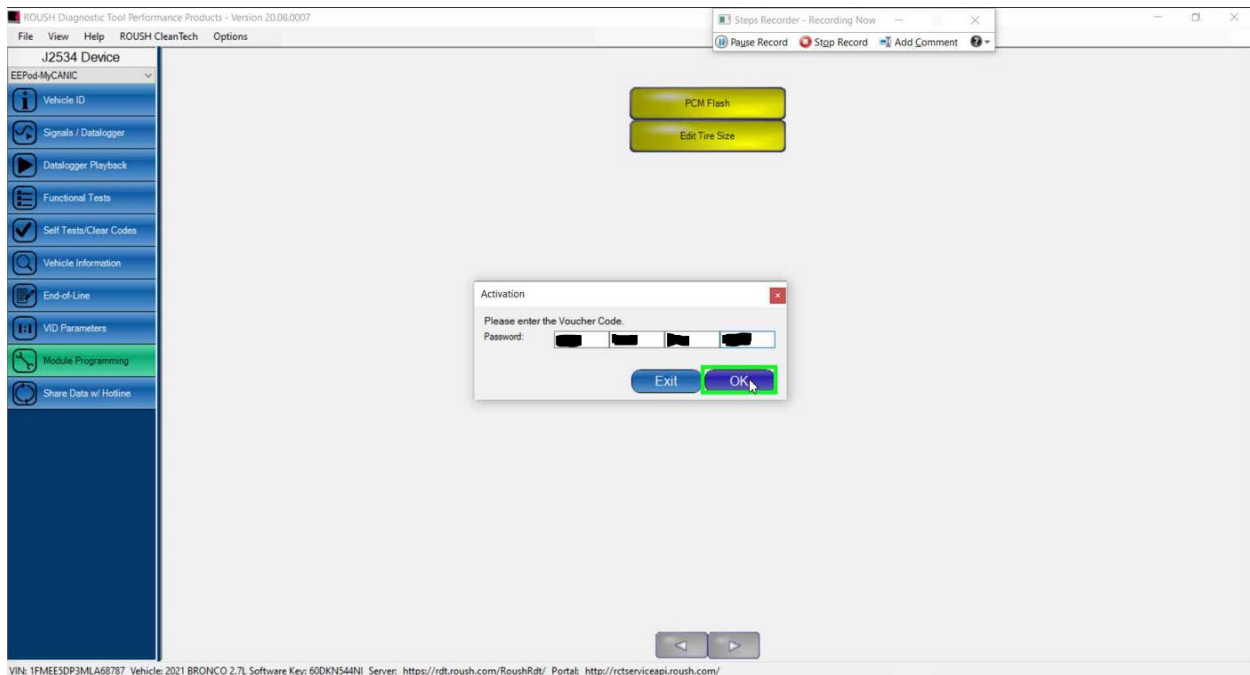
4.



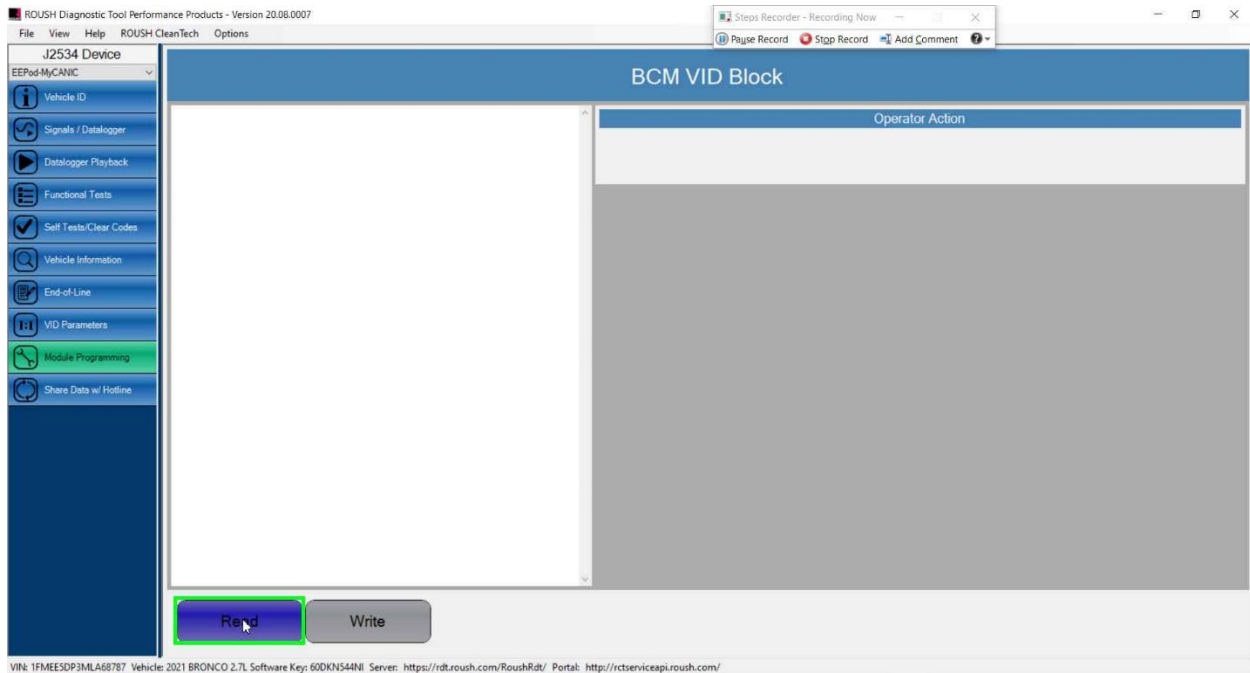
5.



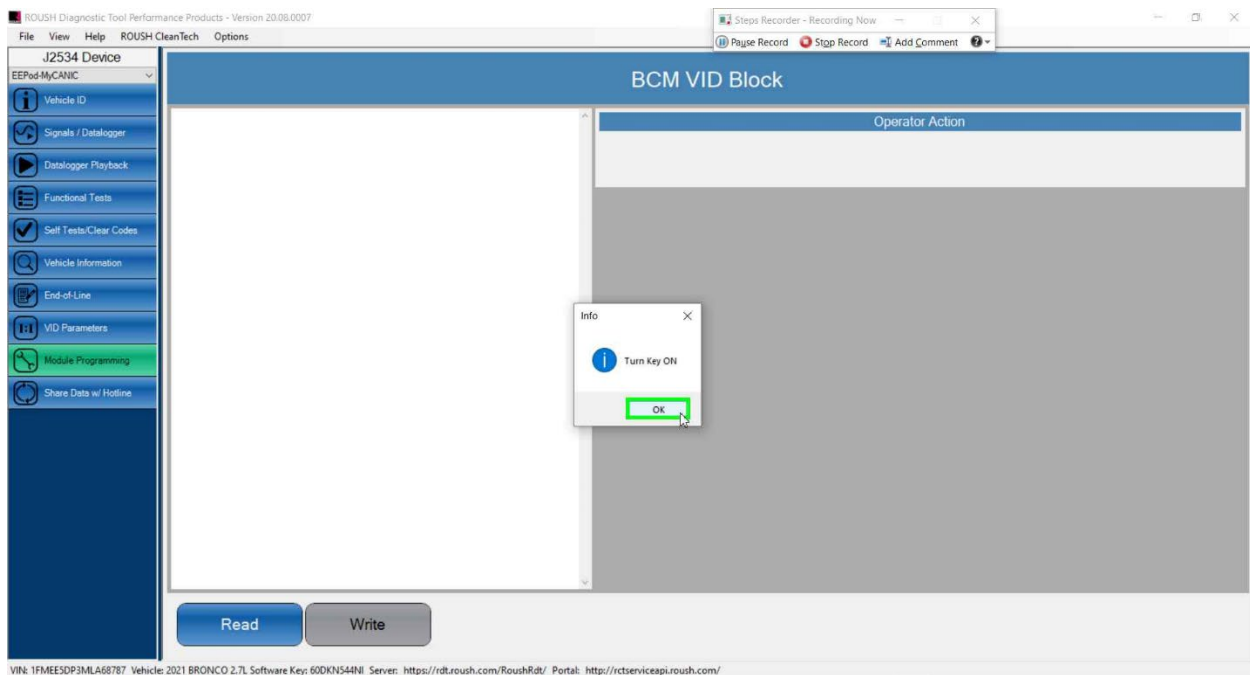
6.



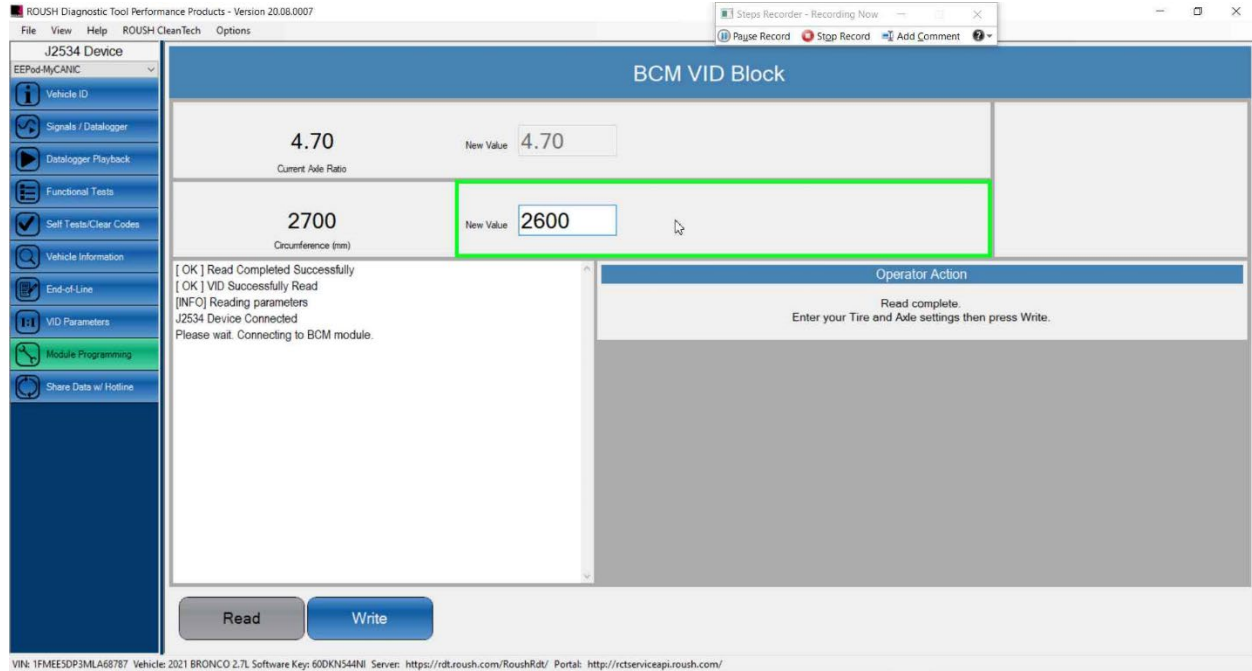
7.



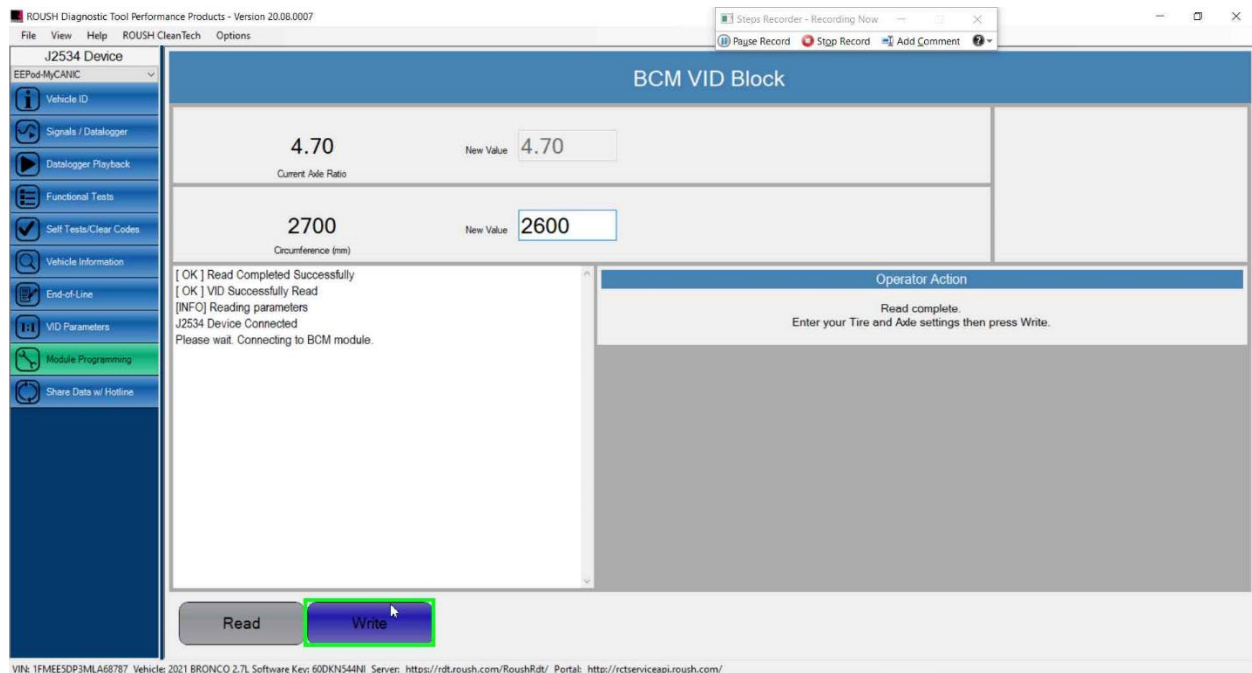
8.



9.



10.



11.

ROUSH Diagnostic Tool Performance Products - Version 20.08.0007

Steps Recorder - Recording Now

File View Help ROUSH CleanTech Options

J2534 Device

EEPed-MyCANIC

Vehicle ID

Signals / Datalogger

Datalogger Playback

Functional Tests

Self Tests/Clear Codes

Vehicle Information

End-of-Line

VID Parameters

Module Programming

Share Data w/ Hotline

BCM VID Block

4.70	Current Axle Ratio	New Value	4.70
2700	Circumference (mm)	New Value	2600

Please wait 10 seconds.
Please wait. Relearning vehicle data.
DID Write Succeeded
Result: 6E DE 0E
J2534 Device Connected
[OK] Read Completed Successfully
[OK] VID Successfully Read
[INFO] Reading parameters
J2534 Device Connected
Please wait. Connecting to BCM module.

Operator Action

Read complete.
Enter your Tire and Axle settings then press Write.

Info

Turn Key OFF and open the door

OK

Read Write

VIN: 1FME5DP3MLA68787 Vehicle: 2021 BRONCO 2.7L Software Key: 60DKN544NI Server: <https://rdt.roush.com/RoushRdt/> Portal: <http://rctserviceapi.roush.com/>

12.

ROUSH Diagnostic Tool Performance Products - Version 20.08.0007

Steps Recorder - Recording Now

File View Help ROUSH CleanTech Options

J2534 Device

EEPed-MyCANIC

Vehicle ID

Signals / Datalogger

Datalogger Playback

Functional Tests

Self Tests/Clear Codes

Vehicle Information

End-of-Line

VID Parameters

Module Programming

Share Data w/ Hotline

BCM VID Block

4.70	Current Axle Ratio	New Value	4.70
2700	Circumference (mm)	New Value	2600

Please wait 15 seconds
Please wait 10 seconds
Please wait. Relearning vehicle data.
DID Write Succeeded
Result: 6E DE 0E
J2534 Device Connected
[OK] Read Completed Successfully
[OK] VID Successfully Read
[INFO] Reading parameters
J2534 Device Connected
Please wait. Connecting to BCM module.

Operator Action

Read complete.
Enter your Tire and Axle settings then press Write.

Info

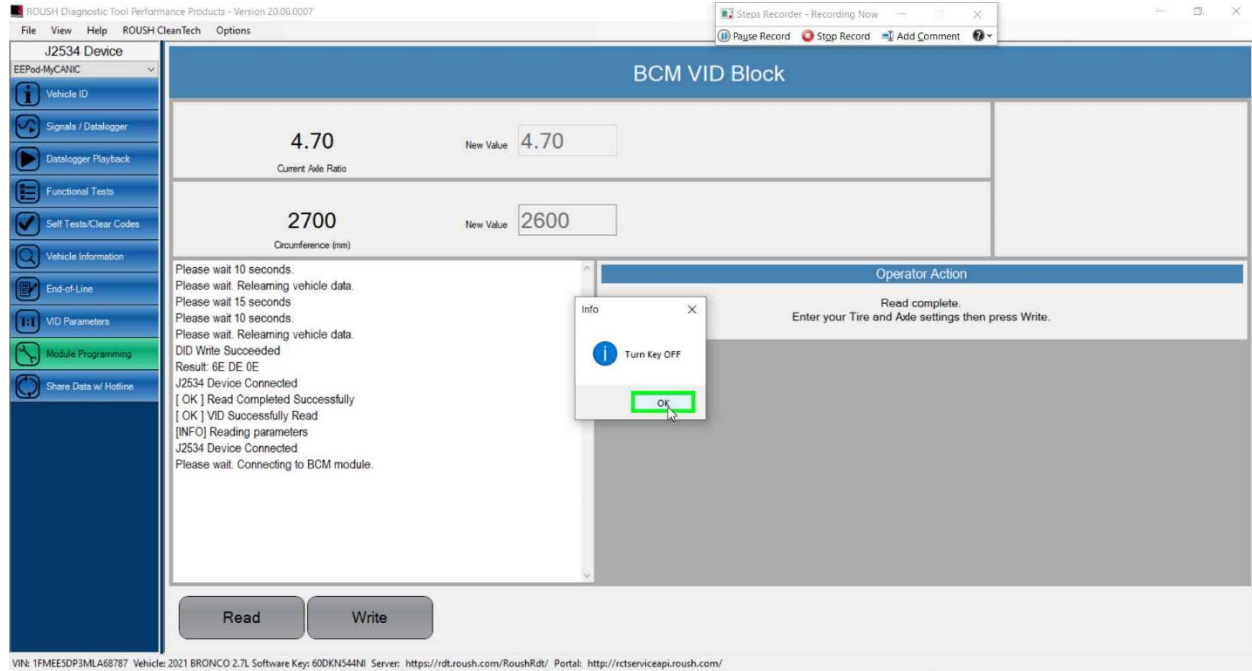
Turn Key ON

OK

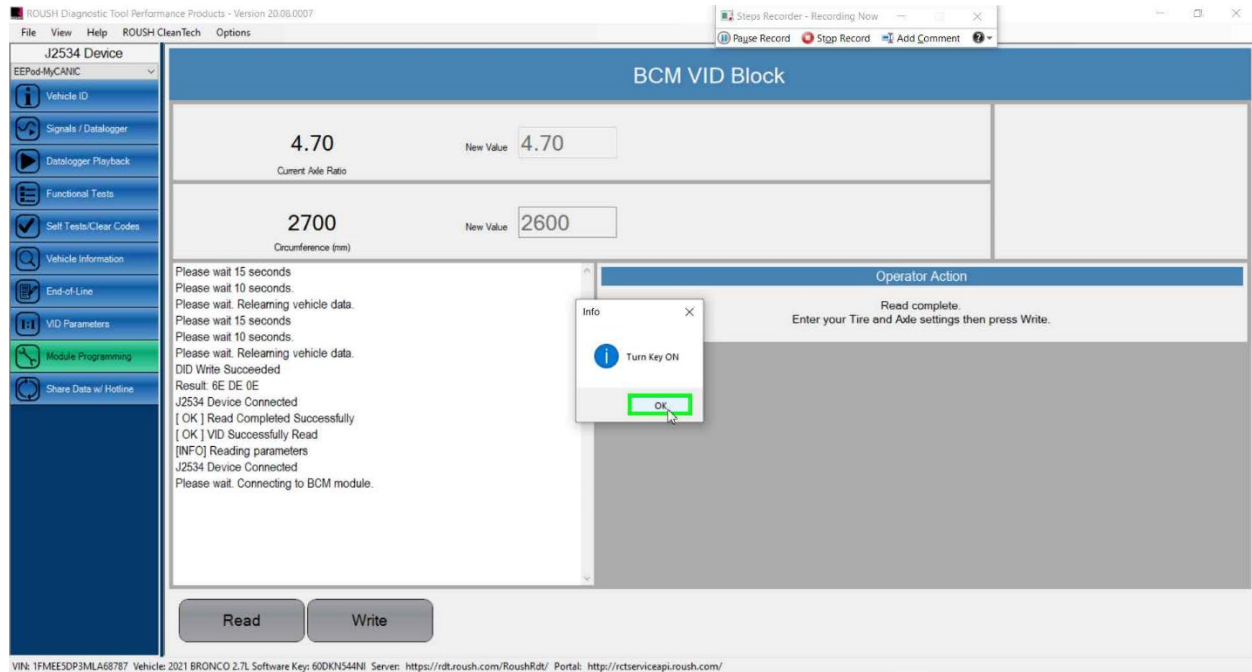
Read Write

VIN: 1FME5DP3MLA68787 Vehicle: 2021 BRONCO 2.7L Software Key: 60DKN544NI Server: <https://rdt.roush.com/RoushRdt/> Portal: <http://rctserviceapi.roush.com/>

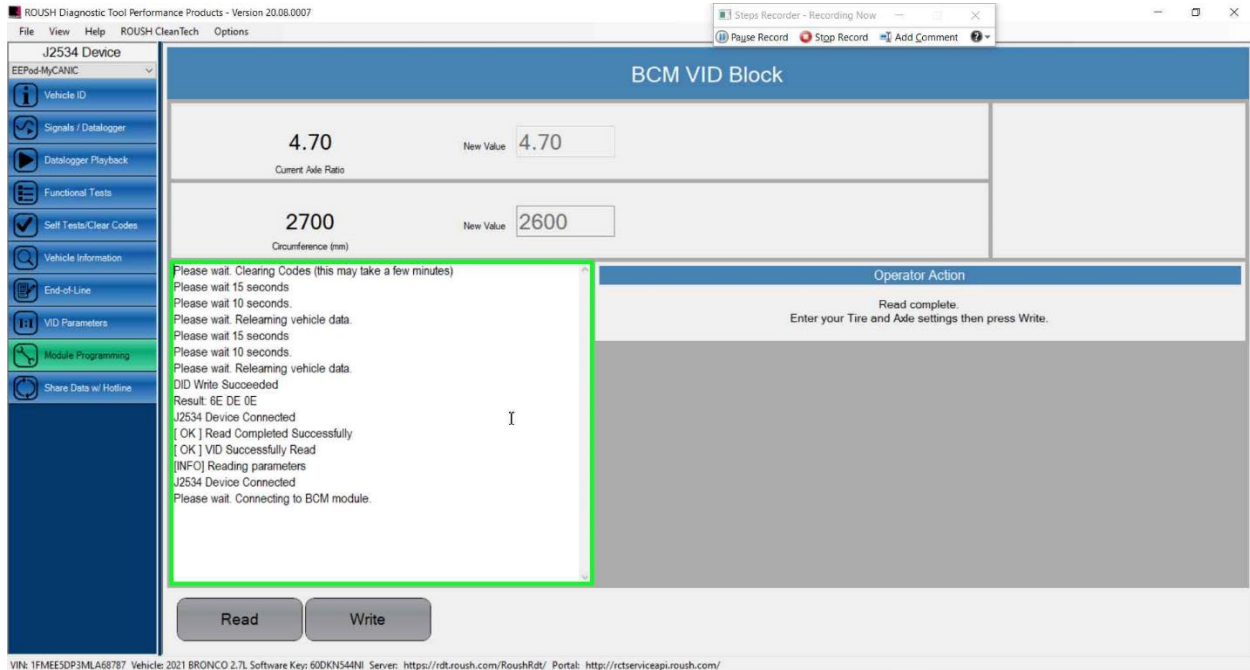
13.



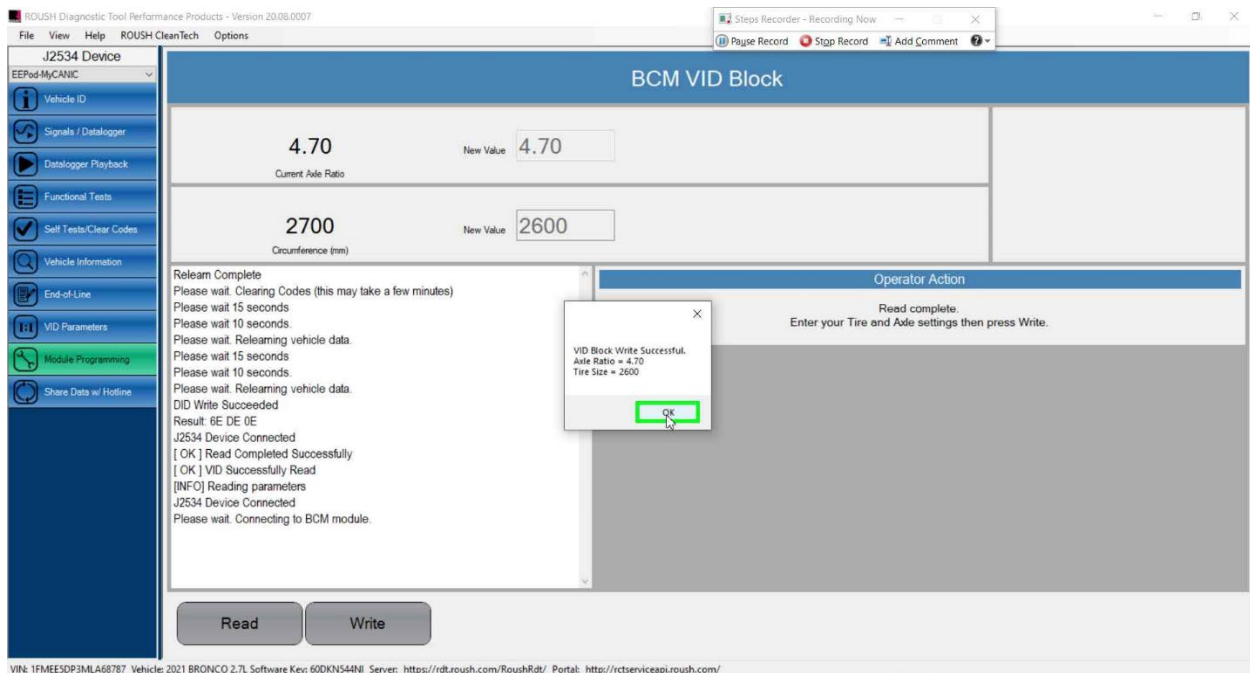
14.



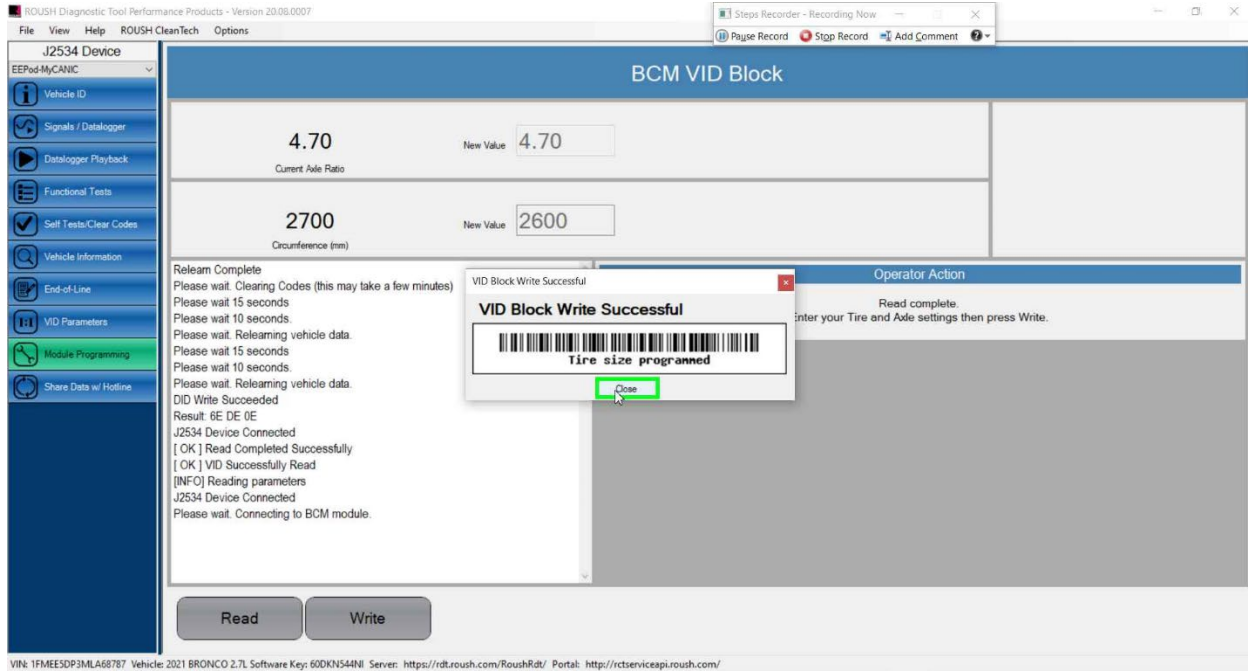
15.



16.



17.



ROUSH Diagnostic Tool Performance Products - Version 20.08.0007

Steps Recorder - Recording Now

Pause Record Stop Record Add Comment

J2534 Device

EEPd-M/CANIC

Vehicle ID

Signals / Datalogger

Datalogger Playback

Functional Tests

Self Tests/Clear Codes

Vehicle Information

End-of-Line

VID Parameters

Module Programming

Share Data w/ Hotline

BCM VID Block

4.70	New Value	4.70
Current Ase Ratio		
2700	New Value	2600
Circumference (mm)		

Relearn Complete
Please wait. Clearing Codes (this may take a few minutes)
Please wait 15 seconds
Please wait 10 seconds
Please wait. Relearning vehicle data.
Please wait 15 seconds
Please wait 10 seconds
Please wait. Relearning vehicle data.
DID Write Succeeded
Result: 6E DE 0E
J2534 Device Connected
[OK] Read Completed Successfully
[OK] VID Successfully Read
[INFO] Reading parameters
J2534 Device Connected
Please wait. Connecting to BCM module.

Operator Action

Read complete.
Enter your Tire and Ase settings then press Write.

VID Block Write Successful

Tire size programmed

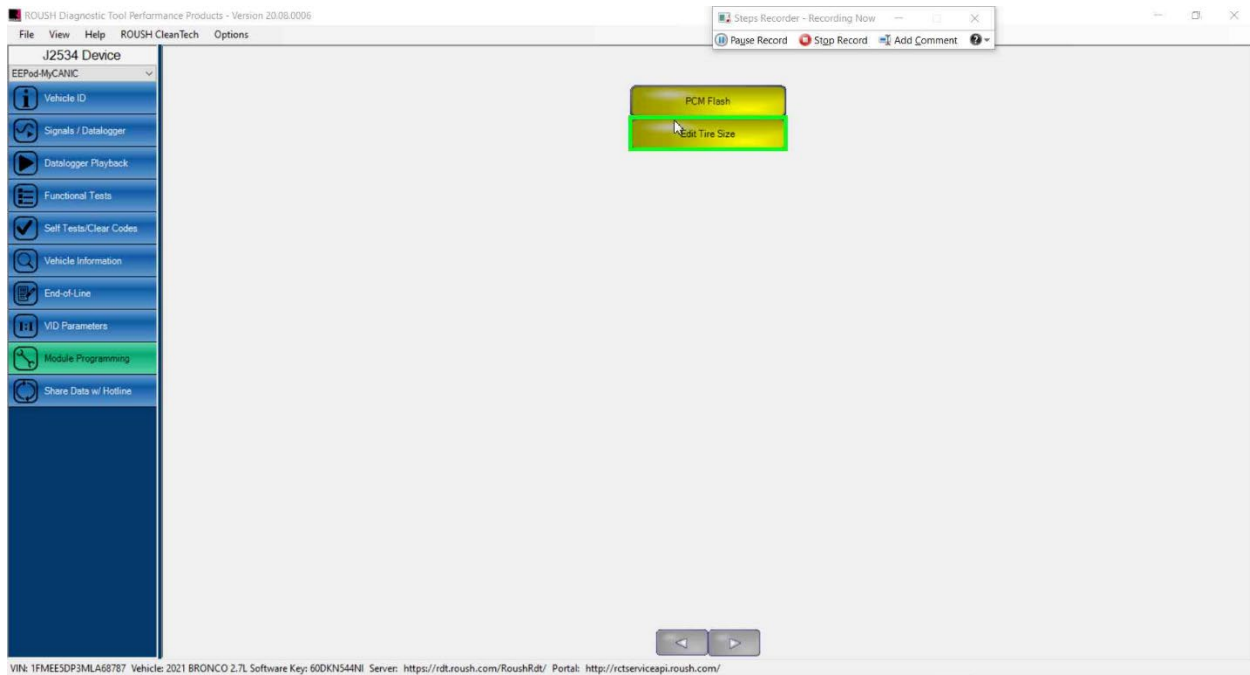
Close

Read Write

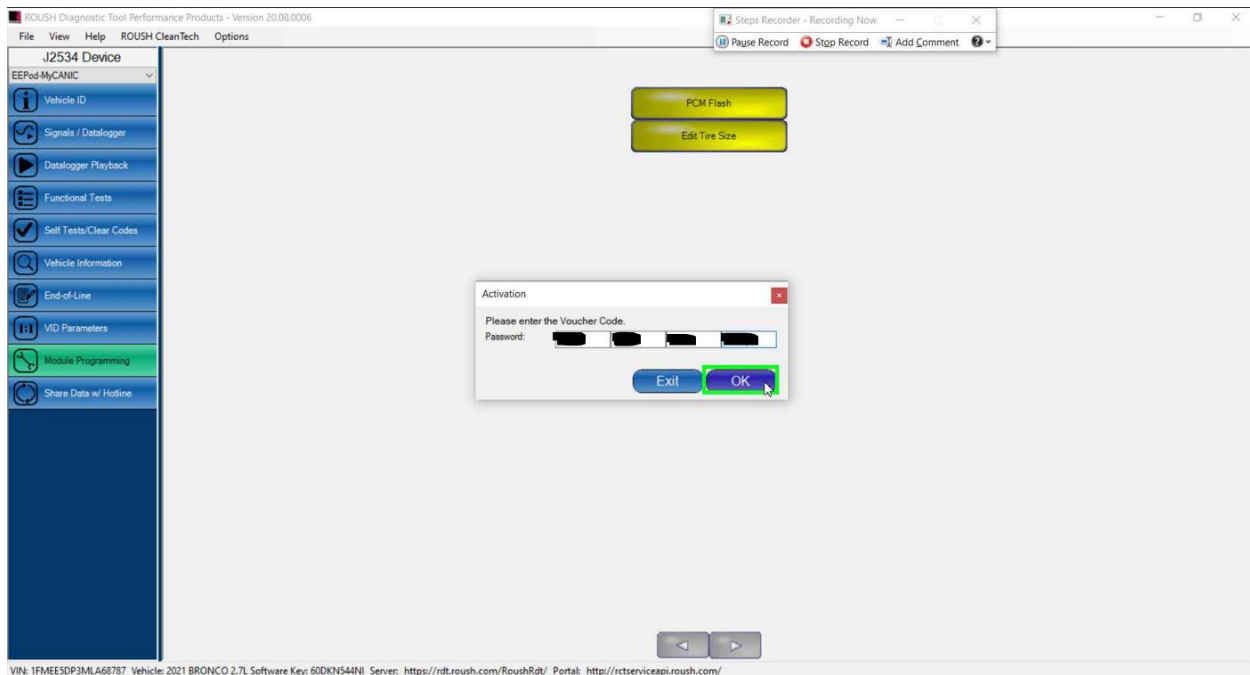
VIN: 1FMEESDP3MLA68787 Vehicle: 2021 BRONCO 2.7L Software Key: 60DKN54NII Server: <https://rdt.roush.com/RoushRdt/> Portal: <http://rctserviceapi.roush.com/>

WHEN AN INVALID TIRE SIZE IS ENTERED

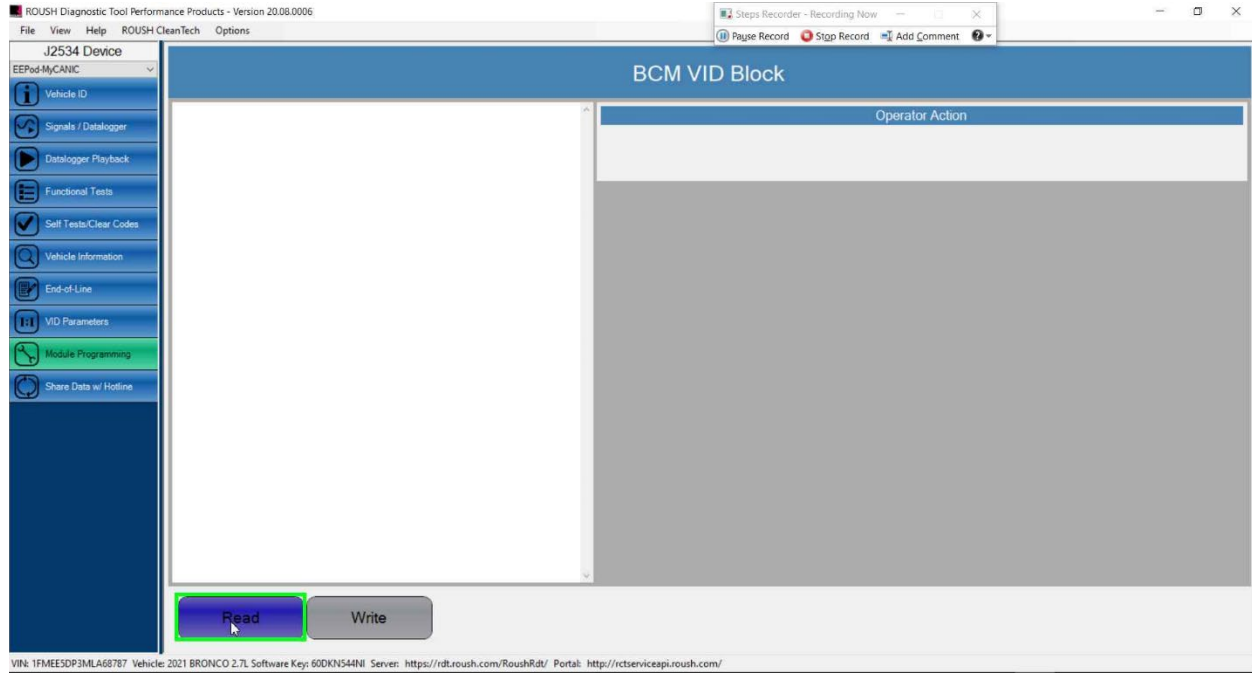
1.



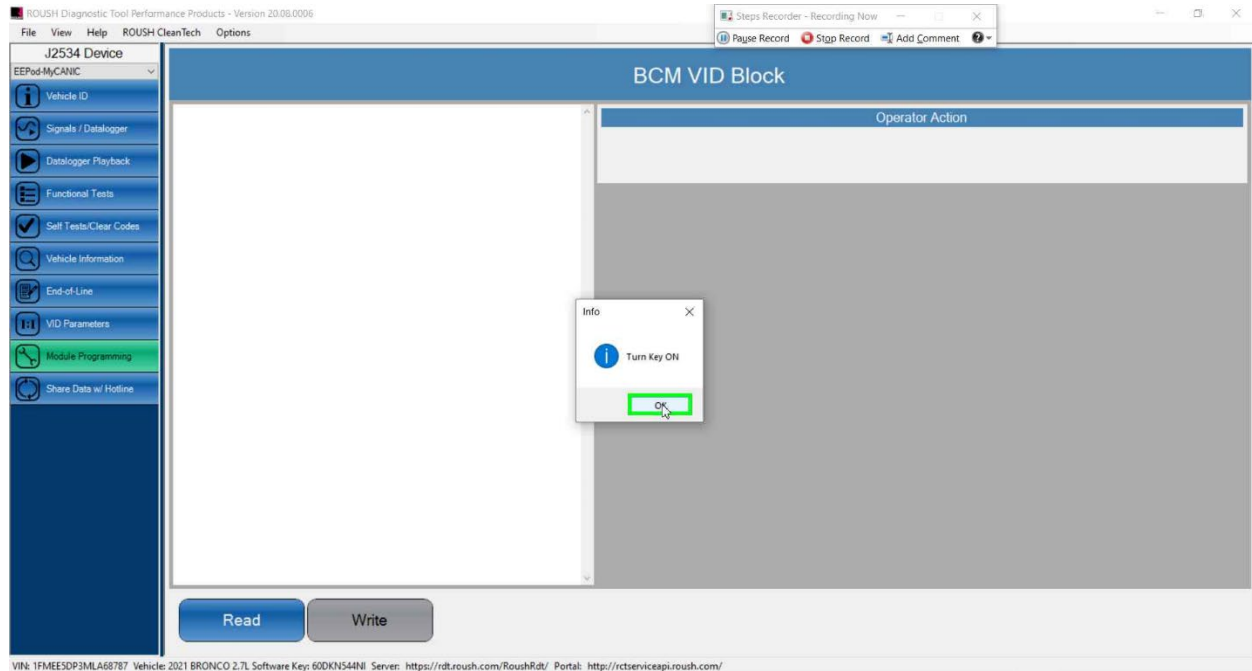
2.



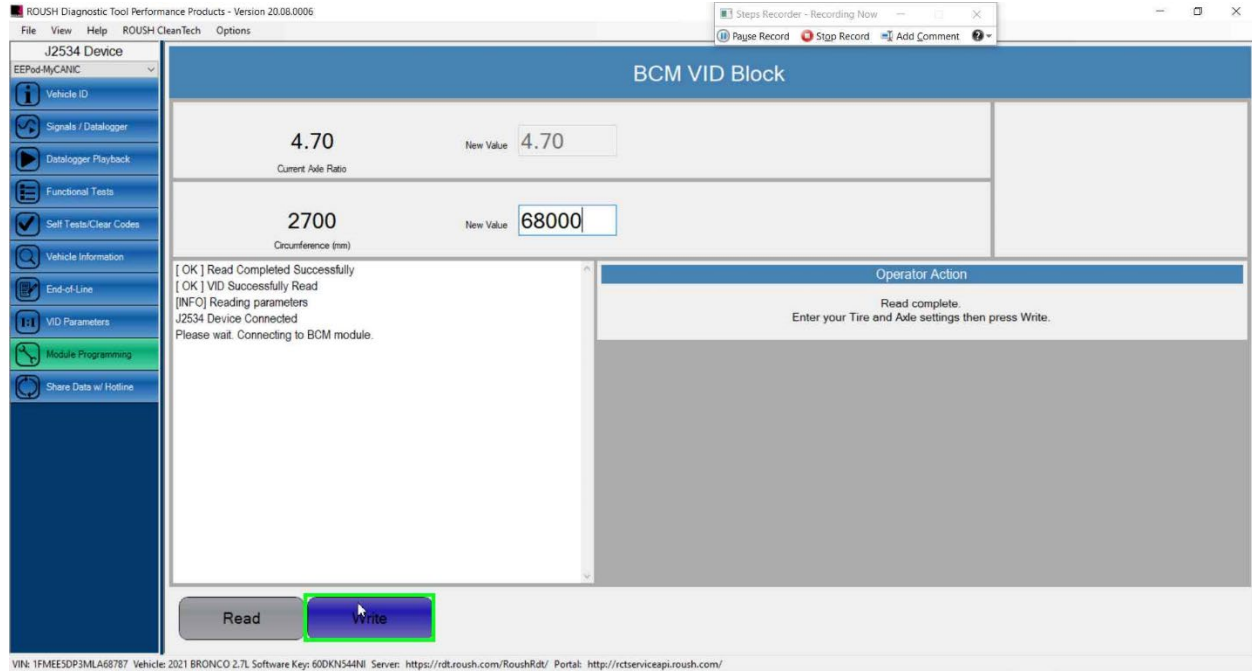
3.



4.



5.



6.

